

EVMS-Sentara Healthcare Analytics and Delivery Science Institute

2019
REPORT

**UNLOCKING
OPPORTUNITIES**

Support Services



Collaboration

Training



Research Studies



Awards



TABLE OF CONTENTS

A Message from the Director | [Page 4](#)

Meet the HADSI Team | [Page 5](#)

Services at a Glance | [Page 6](#)

Services by Department | [Page 7](#)

Funding | [Page 8](#)

HADSI Pilot Funded Projects | [Page 9](#)

Pilot Funding Outcomes | [Page 10-11](#)

Grant Writing Support | [Page 12](#)

Joint Appointments | [Page 13](#)

Partnerships and Collaborations | [Page 14](#)

Funded Projects with HADSI Support | [Page 15](#)

Research Focus Areas | [Page 16](#)

2019 Accomplishments | [Page 17-18](#)



A MESSAGE FROM THE FOUNDING DIRECTOR



Dr. Sunita Dodani

I am delighted to share our 2nd Annual Report with you that captures the key milestones, initiatives, innovations, partners, honors, and discoveries and unlocks endless opportunities for collaborations and partnerships. The accomplishments within — driven by our HADSI staff, EVMS & Sentara researchers — are a testament to EVMS-Sentara HADSI's commitment to high-quality healthcare by leading EVMS and Sentara efforts in applying rigorous, high-quality analytic science skills and thus improving the value proposition of healthcare.

Here are some of our achievements at a glance:

2019 saw HADSI continuing to grow in services provided, grants submitted and established partnerships throughout Hampton Roads and beyond. In total, we entertained 136 new service projects, a 20% increase from previous years, with requests growing in the fields of database design, grant submission assistance, and publication preparation support. To date, \$333k has been dispersed to fund 22 pilot projects with four awards in 2019 concentrating on health disparity research.

HADSI also pledged in 2019 to provide robust, transparent, and reproducible research through utilizing big data resources and machine learning tools. HADSI began providing training in big data science methodology and support through direct consultations and small group workshops to both EVMS and Sentara personnel. With the support of the EVMS Brock Institute, we now offer access to a Virginia Health Information Dashboard that allows all of EVMS to access patient-level line data from all Virginia Hospitals, including patient demographics, hospital information, clinical diagnoses, cost and readmissions. Additionally, with the support of Sentara, TriNetX was made available to EVMS. TriNetX is a global health research network that optimizes clinical research and enables discoveries through the generation of patient-level data. TriNetX combines real-time access to aggregate, patient-level Sentara Healthcare data with state-of-the-art analytics to answer complex research questions.

Finally, HADSI continued to expand on community engagement initiatives focused on improving chronic disease outcomes in our region. Our new initiatives expanded on previously established community-university partnerships and cross-disciplinary collaborations by further influencing learner involvement and improving the health of our most vulnerable communities. Our primary goal for all programs is to recognize and value the knowledge, perspectives, and resources of our community partners. These programs will be specifically designed to serve as a public resource for community residents, groups, and organizations to collaboratively address both perceived and real health issues of our community. With the support of our HADSI Community Advisory Board, we have partnered with local churches and community centers as well as larger organizations, such as the American Heart Association, American Diabetes Association, and the public health departments of Norfolk and Chesapeake.

Our successes of 2019 would not have been possible without the support of the EVMS-Sentara Governance Board, EVMS-Sentara Steering committee, EVMS and Sentara community and our community/partners.

To learn more about how EVMS-Sentara HADSI supports research and education, I encourage you to visit our website at www.evms.edu/hadsi. Further, I also encourage you to engage with our exceptional team to identify and unlock collaborative opportunities for clinical research and community engagement efforts.

Sunita Dodani MD, MSc, PhD
Founding Director, EVMS-Sentara HADSI

MEET THE HADSI TEAM



Sunita Dodani



Jiangtao Luo



Mohan Pant



Ismail El Moudden



Lauren Green



Brynn Sheehan



Kristi Morgan



Joshua Edwards



Jaclyn Simpkins



Carter Overton

NEW TO THE TEAM



Sarah DePerrior, MPH, *Clinical Data Specialist*

Sarah DePerrior completed her BA in Public Health at the University of Rochester in 2013 and then worked for several years on pediatric asthma management studies at the University of Rochester Medical Center. She then went on to complete her MPH in Epidemiology at the University of Pittsburgh in 2019, where she worked on a national case-control study of environmental risk factors for ALS.

TEAM MEMBER SPOTLIGHT

Brynn Sheehan, PhD, *Assistant Professor, Psychiatry and Behavioral Sciences*

Dr. Sheehan received her doctoral degree in Applied Experimental Psychology from Old Dominion University after receiving her MS in the same field and an MA in Justice from the University of New Hampshire. For five years, she conducted research in the Behavioral Alcohol and Related Studies laboratory at ODU where she studied the social and cognitive factors associated with substance use and aggression among young adults. Her dissertation focused on the relationship between stress, self-regulation, alcohol use, and aggression using a daily diary study.

Recently, Dr. Sheehan has conducted a number of social psychology studies examining the association between direct and indirect experiences with race- and gender-related violence on psychological adjustment and willingness to participate in social action.

"Brynn Sheehan was amazing to work with. [She] was invested in my project which made it easy to discuss ideas with her ... I couldn't have asked for a better researcher to work with!"

– Round 1 Pilot Funding Recipient

"... I'd highly recommend Brynn! She was very knowledgeable and helpful throughout the whole process of designing my protocol, collecting data, and analyzing it."

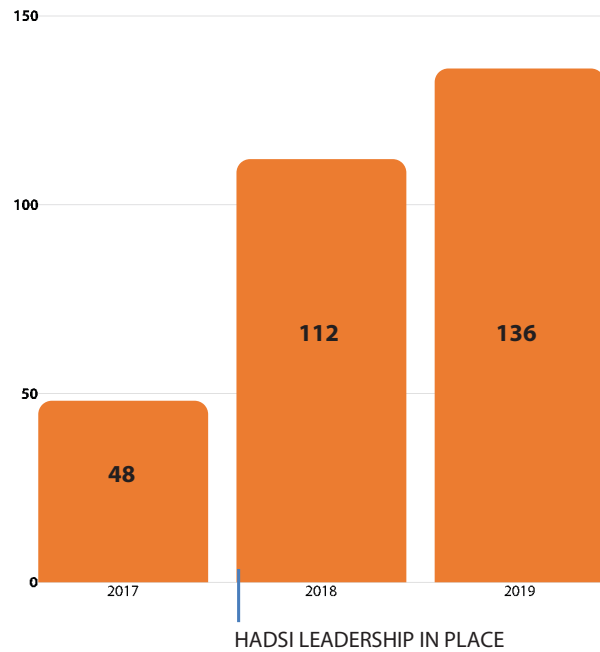
– EVMS Internal Medicine

HADSI SERVICES AT A GLANCE

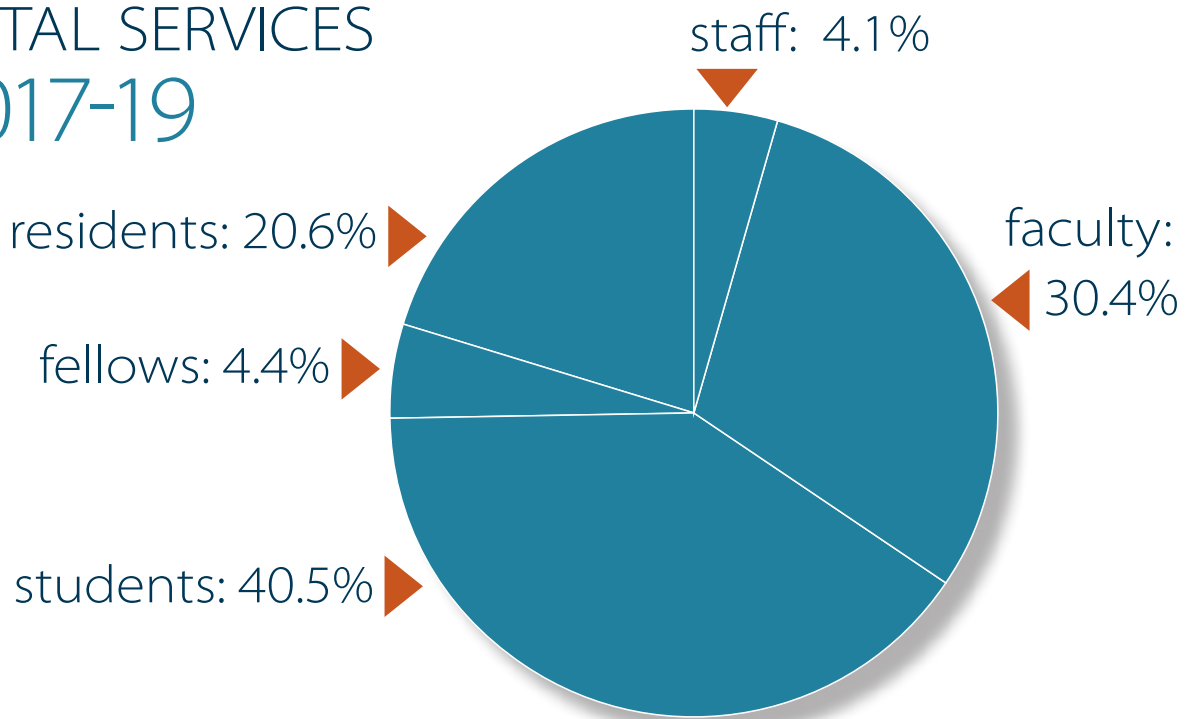
TYPES OF SERVICES

- Abstract Preparation
- Data Analysis
- Data Extraction
- Database Design
- Database Management
- Grant Submission
- IRB Assistance
- Power Analysis
- Protocol Development
- Publication Preparation
- Sample-Size Calculation
- Study Design
- Survey Research
- Other

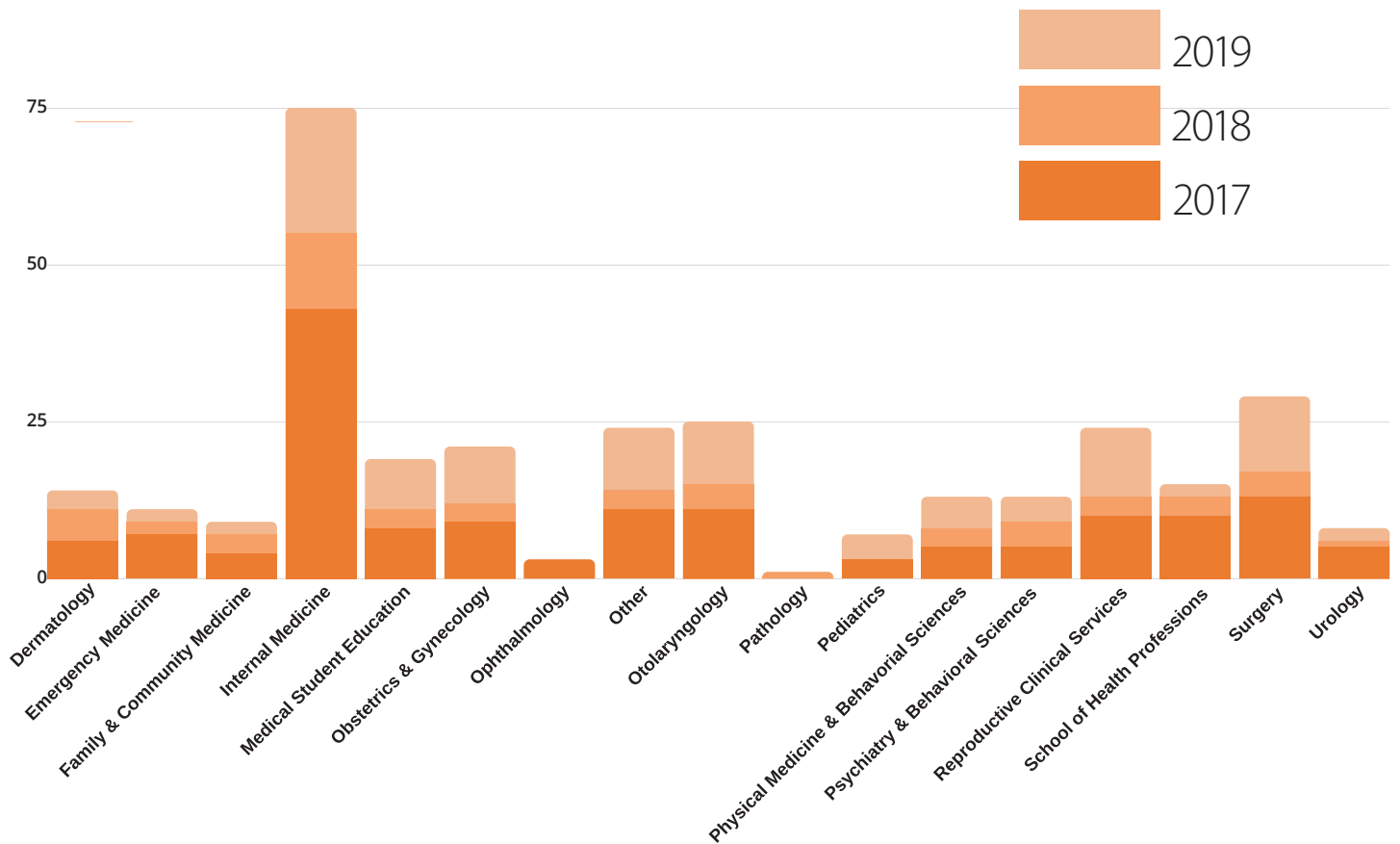
AMOUNT OF NEW SERVICE REQUESTS



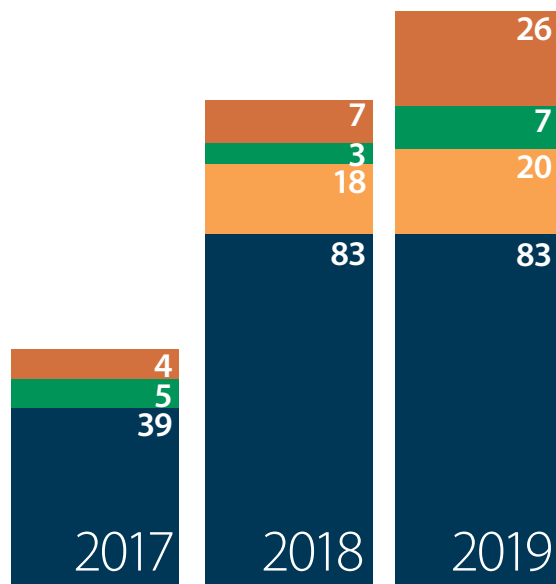
TOTAL SERVICES 2017-19



SERVICES BY DEPARTMENT

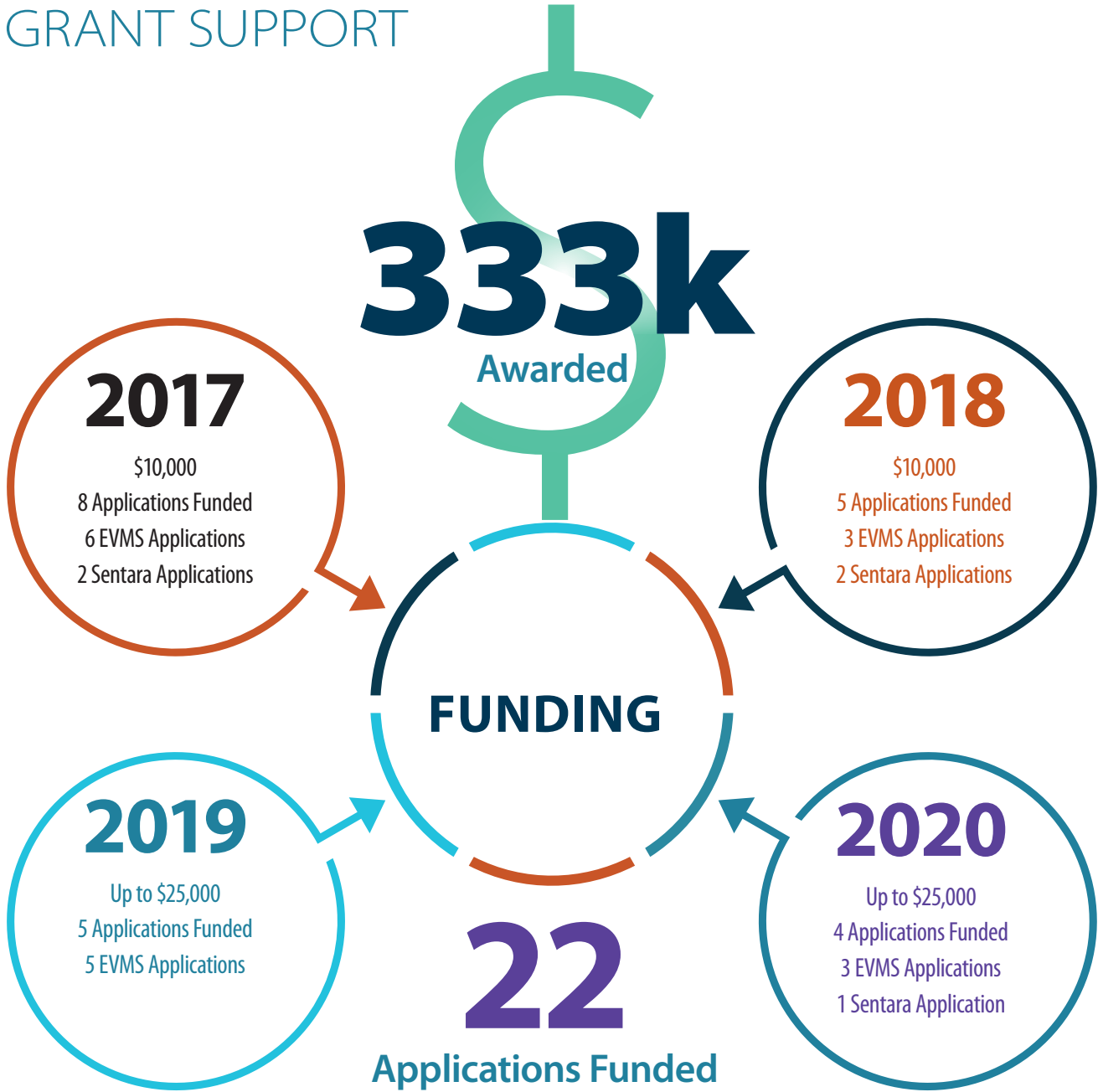


TYPES OF DATA SOURCES

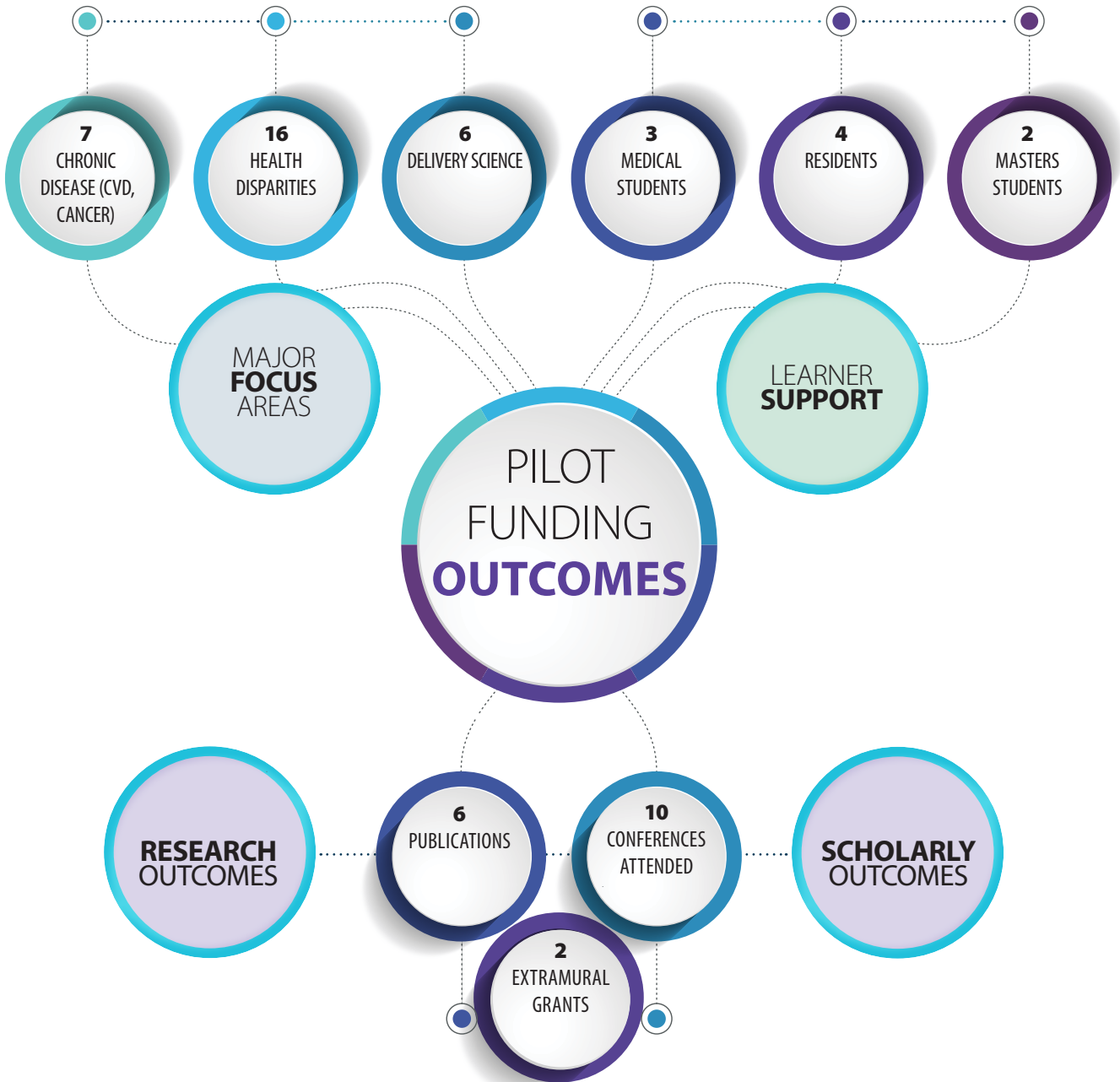


HADSI FUNDING

GRANT SUPPORT



HADSI PILOT FUNDED PROJECTS



PILOT FUNDING OUTCOMES

ROUND 1 - 2017 (\$10,000)

JOHN BRUSH, MD (SENTARA)

Epic Data Project – Retrospective Study

Project Keywords: Health Disparities, Diabetes & its Complications

Grant Submitted: NIH R21 – Scored, Not Funded

Manuscripts Submitted: American Journal of Cardiology, Accepted 2019

Study completed

MEGAN CLAY, RN (SENTARA)

Epic Data Project - Prospective Study

Project Keywords: Critical Care Nursing, Evidence-Based Practice Implementation

Presented results at two nursing conferences

Study ongoing

MARISSA GALICIA-CASTILLO, MD (EVMS)

Epic Data Project - Retrospective Study

Project Keywords: Quality of Life Research, Cost Utilization

Working on Manuscript

Study completed

KENT LAM, MD (EVMS)

Epic Data Project - Retrospective Study

Project Keywords: Olfactory Physiology, Nasal Drug Delivery Devices

Manuscripts in progress

Study completed

DAVID LIEB, MD (EVMS)

Epic Data Project - Retrospective Study

Project Keywords: Thyroid Cancer Management, Type 1 and 2 Diabetic Complications

Presented data results at a conference

Study ongoing

BRIAN MARTIN, PHD (EVMS)

Epic Data Project - Retrospective Study

Project Keywords: Access to care, financing healthcare services, cost/benefit analysis, and healthcare workforce development

Study completed/No presentation, manuscript or grant outcome

DEBORAH MORRIS, MD (EVMS)

Epic Data Project - Retrospective Study

Project Keywords: Hospice and Palliative Medicine

Manuscript Submitted: Journal of Hospital Administration, Accepted 2019

Presented at 2 conferences

Study completed

ELIAS SIRAJ, MD (EVMS)

Epic Data Project - Retrospective Study

Project Keywords: Cardiovascular disease in the diabetic population, post-transplant diabetes

Grant Submitted NIH R21- received score

Study completed

ROUND 2 - 2018 (\$10,000)

MARYBETH HUGHES, MD (EVMS)

Epic Data Project - Retrospective Study

Project Keywords: Neuroendocrine Tumors, Colorectal Cancers

Presented results at a conference

Study completed

JEFF MCTAVISH, MD (SENTARA)

Epic Data Project - Retrospective study followed by prospective survey

Project Keywords: General Radiology, Radiologic Interventions

Study ongoing-collecting data

BEVERLY ROBERTS-ATWATER, DO, PHD (EVMS)

Prospective Study

Project Keywords: Cerebro-Vascular Rehabilitation,
Sub-Acute
Study ongoing

ABBY VAN VOORHEES, MD (EVMS)

Epic Data Project - Retrospective Study

Project Keywords: Psoriasis and Eczema Research
Presented findings at a conference
Manuscript in writing phase
Study completed

GREG WEINGART, MD (SENTARA)

Epic Data Project - Retrospective Study

Project Keywords: Emergency Department Utilization
Study ongoing- in data analysis phase

ROUND 3 - 2019
(Up to \$25,000)

PAUL ARAVICH, PHD (EVMS)

Epic Data Project - Prospective Study

Project Keywords: Cognitive and Emotional Impact of
Brain Injury
Study ongoing

TRACY FU, PHD (EVMS)

Epic Data Project - Retrospective Study

Project Keywords: Family and Community Based
Interventions
Study ongoing

THOMAS MCCUNE, MD (EVMS)

Epic Data Project - Retrospective Study

Project Keywords: Acute Kidney Injury, Disease Burden,
Health-Related Quality of Life
Study ongoing

AARON NELSON, MD (EVMS)

Allscript Data - Prospective Study

Project Keywords: Diabetes, Cardiovascular Disease/
Heart Failure and Calcium Disorders
Study ongoing

HAMID OKHRAVI, MD (EVMS)

Medicare Data - Retrospective Study

Project Keywords: Quality of Life, Impact of Mild
Cognitive Impairment

ROUND 4 - 2020
(Up to \$25,000)

CARRIE ELZIE, PHD (EVMS)

Allscript Data - Prospective Study

"Use of Virtual Reality to Improve Understanding,
Empathy and Self-efficacy in Caregivers of Dementia
Patients"
Study not started

MARGARET BAUMGARTEN, MD (EVMS)

Prospective Study

"Mentoring4Health - Assessing Health Impacts of
Adding Home Monitoring of Blood Pressure and
Weight for Food Pantry Clients Enrolled in the
Connect4health Wellness Coaching Model"
Study not started

MARISSA GALICIA-CASTILLO, MD (EVMS)

Epic Data Project - Prospective Study

"Effectiveness of a dedicated "Goals of Care Team" for
Older Patients in the Intensive Care Unit"
Study not started

ALEXANDRA LEADER, MD (EVMS)

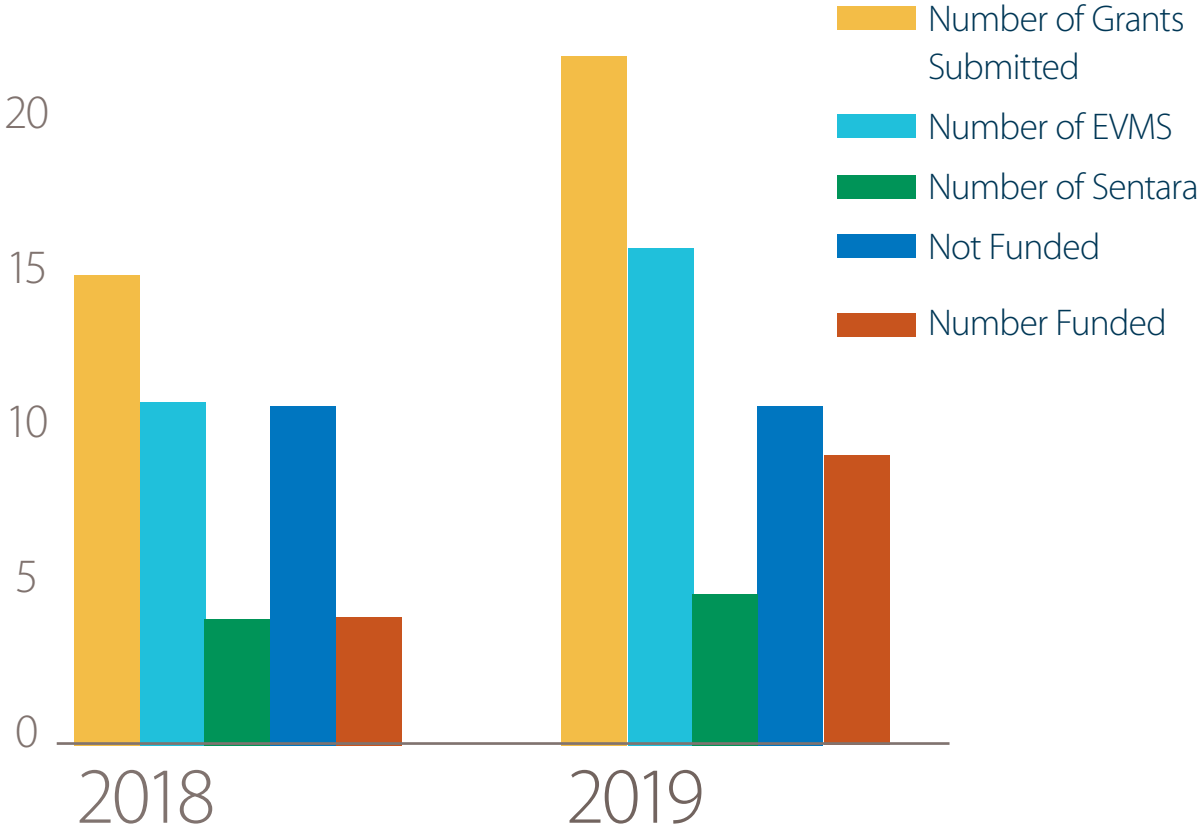
Practice Fusion Data - Retrospective Study

"Examining Hampton Roads' Most Socially
Disadvantaged Populations"
Study not started

HADSI GRANT WRITING SUPPORT

Grant editing support was provided to the investigators who submitted grants to the following agencies:

- American Heart Association
- Health Resources and Services Administration (HRSA)
- Geriatrics Workforce Enhancement Program (GWEP)
- Small Business Innovation Research (SBIR) Program
- Veterans Affairs Medical Center
- Hampton Roads Community Foundation
- Virginia Catalyst
- American Diabetes Association



HADSI JOINT APPOINTMENTS

Two faculty positions (funded by Sentara) have a joint appointment with the School of Health Professions (30%) and HADSI (70%).

These two faculty participate in teaching several courses in the two newly developed master programs that are aligned with HADSI vision and goals.

These are Masters in Healthcare Delivery Science (started in 2018) and Masters in Healthcare Analytics (started in 2019).

Budget Targets for HADSI Biostatisticians (two Sentara Affiliation Faculty Positions)

This is assessed by:

- Number of students enrolled in each program

Healthcare Delivery Science

FY19 - 12 students

FY20 - 6 students

Healthcare Analytics

FY19 - 3 students

FY20 - 7 students



- Courses taught by each biostatistician
 - MHA 502, Research Methods (3 credits) - \$8,271 in tuition (received in calendar year 2018)
 - MHA 510/MHDS 602, Population Health and Preventive Care (3 credits) – \$13,785 in tuition
 - MHA 500/MHDS 504, Introduction to Healthcare Analytics (3 credits) – \$22,488 in tuition
- Number of graduates from each program
 - Healthcare Delivery Science – 9 graduates (in FY19)
 - Health Analytics – 0 graduates, program started Fall 2018

PARTNERSHIPS & COLLABORATIONS ACROSS VIRGINIA



Charlottesville

University of Virginia

Hampton Roads

American Diabetes Association (Chesapeake)

American Heart Association
(Virginia Beach)

Hampton Veteran Administration
Medical Center (Hampton)

Healthy Living Center

Norfolk State University

Old Dominion University

Portsmouth Health Department

Sentara Leigh Hospital (Virginia Beach)

William & Mary (Williamsburg)

Richmond

Virginia Commonwealth University

Medical Society of Virginia

Virginia Department of Agriculture

Roanoke

Carilion Clinic



FUNDED PROJECTS WITH HADSI SUPPORT

FUNDED PROJECTS WITH HADSI SUPPORT

Health Resources and Services Administration

Geriatrics Workforce Enhancement Program
PI: Dr. Mary Rubino (EVMS) | \$3,000,000 | 2019-2024
HADSI Personnel: Mr. Josh Edwards

NIH-NCI P30 Supplement

Cancer Center Catchment Area Population Health Assessment
PI: Dr. Bernard Fuemmeler (VCU), Site PI: Sunita Dodani | 2019-2021
HADSI Personnel: Dr. Sunita Dodani (Site PI) and Sarah DePerrior (Co-I)

NIH - NICHD

Impact of Virginia's 2019 Medicaid Expansion and Services Integration on Maternal and Child Health Outcomes and Equity – Multilevel Modeling and Systems Science Approaches
PI: Dr. Tracy Fu | \$420,875 | 2020-2023
HADSI Personnel: Dr. Jiangtao Luo

Virginia Catalyst Grant

Novel Preventive Treatment Paradigm to Change the Standard of Care for Those Who Recover from Opioid Overdose
PI: Dr. Gerry Moeller (EVMS), Site PI: Dr. Andrew Plunk (EVMS) | \$226,449 | 2020-2022
HADSI Personnel: Dr. Brynn Sheehan (Co-I)

NIH - SBIR

Regeneration of Epidermal Nerves in Human Diabetic Neuropathy
PI: Dr. Elias Siraj (EVMS) | \$1,500,000 | 2019-2021
HADSI Personnel: Mr. Josh Edwards (Co-I)

NIH - R01

Targeting Brain Macrophage Reservoirs of SIV during HAART
PI: Dr. Woong-Ki Kim | \$180,000 | 2017-2020
HADSI Personnel: Dr. Jiangtao Luo (Biostatistician)

PROJECTS SUBMITTED - FUNDING PENDING

American Cancer Society (ACS)

Challenge of e-cigarettes among young adults
PI: Dr. Paul Harrell (EVMS) | 2020-2022
HADSI Personnel: Dr. Jiangtao Luo (Co-I & Biostatistician)

NIH-NCI P20

Virginia Health Disparities in Cancer
PI: Dr. Vanessa Sheppard (VCU)
PI: Dr. John Semmes (EVMS)
(PI) HADSI Personnel: Dr. Sunita Dodani (P20 Core Co-PI), Dr. Ismail El Mouddin (Biostatistician), Mr. Josh Edwards (Co-I) | 2020-2023 (Will be submitted in June 2020)

Robert Wood Johnson Foundation

The Effect of 2019 Virginia Statewide Medicaid Expansion and Systems Integration on Maternal and Child Health Outcomes - A Natural Experiment Design and System Science Approach
PI: Dr. Tracy Fu (EVMS) | \$500,000 | 2020-2023
HADSI Personnel: Dr. Jiangtao Luo (Biostatistician)

NIH-NCI R01

Challenge of e-cigarettes among young adults
PI: Dr. Paul Harrell (EVMS) | 2020-2023
HADSI Personnel: Dr. Jiangtao Luo (Biostatistician), Dr. Brynn Sheehan (Co-I)
Submitted on Feb 25, 2020

NIH - R01

Pattern Recognition Receptor in Obesity
PI: Dr. Stephen Bonasera
\$3,000,000 | 2020-2023
HADSI Personnel: Dr. Jiangtao Luo (Co-I & Biostatistician)

NIH-NIDA R01

Using Differences in Perceived Legitimacy and Resident Compliance to Promote Fair and Effective Implementation of Smoke Free Housing
PI: Dr. Andrew Plunk (EVMS) | \$3,343,458 | 2020-2023
HADSI Personnel: Dr. Brynn Sheehan (Co-I)

GRANTS SUBMITTED BY HADSI PERSONNEL

Hampton Veteran Affairs Medical Center

Healthy Eating and Living Spiritually
PI: Dr. Sunita Dodani | \$30,000 | 2020 – 2021 (Funded)

American Heart Association

HEALS Med-Tech
PI: Dr. Sunita Dodani | \$10,000 | 2020 – 2021

Hampton Roads Community Foundation, Mental Health Research

How Perceived Fairness of Smoking Bans Affects Substance Use and Willingness to Enter Treatment
PI: Dr. Andy Plunk, Co-PI: Dr. Brynn Sheehan | \$14,729 | 2020-2021

PhRMA Foundation

HEALS Med-Tech
PI: Mr. Joshua Edwards, Dr. Sunita Dodani (Mentor) | \$100,000
2020 – 2022

Smart Healthcare System Development for Virginia Residents

with Cardiovascular Disease and Diabetes: Big Data and Artificial Intelligence Approach
PI: Dr. Jiangtao Luo | 2020-2021

HADSI RESEARCH FOCUS AREAS & CORE PARTNERSHIPS



2019 HADSI ACCOMPLISHMENTS

Sunita Dodani, MD, PhD

Sunita Dodani, MD, PhD, took part in the Spotlight TedTalk on “New Collaborations, New Discoveries, New Thinking” at the 2019 Women Building Bio Regional Conference, Fairfax, VA

Josh Edwards, MPH

Josh Edwards, MPH, received the EVMS President’s Award for Community Service, October 2019. Josh co-authored “Development and Validation of the Norfolk Quality of Life Fatigue, Tool (QOL-F), a New Measure of Perception of Fatigue. Journal of the American Medical Directors Association. (October 2019): 21. Josh gave a series of presentations: “Utility of In Vivo Corneal Confocal Microscopy for Detection of Neuropathy in Subjects with Type 2 Diabetes Mellitus,” EVMS 31st Annual Research Day. October 11, 2019. Norfolk, VA. (Poster); “Knowledge, Attitudes, and Beliefs Regarding HIV Post-Exposure Prophylaxis” and “Attitudes and Practices Regarding HIV Post-Exposure Prophylaxis,” Southern Medical Association’s 2019 Southern Regional Assembly. Birmingham, Alabama. (Poster); “Attitudes and Practices Regarding HIV Post-Exposure Prophylaxis.” Annual Meeting of Infectious Diseases Society of America. October 2-6, 2019. Washington, DC (Poster); “Utilizing a Quality of Life (QOL) to Examine the Presence of Fatigue in Subjects with Diabetes.” EVMS Summer Scholars Research Day. June 29-30, 2019. Norfolk, VA. (Poster); “Evaluate Faculty and Residents Readiness to Assess and Counsel Regarding Increased Breast Density and Increased Breast Density and Increased Breast Cancer Risk.” EVMS Summer Scholars Research Day. June 29-30, 2019. Norfolk, VA. (Poster).

Jiangtao Luo, PhD

Jiangtao Luo, PhD, co-authored “Impact of unconditional cash transfers: a replication study of the short-term effects in Kenya,” Journal of Development Effectiveness (RJDE); “The influence of medical providers on HPV vaccination among children of Mexican mothers: Comparison between Mexico and the Midwest region of the United States,” BMC Public Health 2019;515; “Geospatial, Clinical, and Social Determinants of Hospital Readmissions,” American Journal of Medical Quality; “Long Term Outcomes in Older Trauma Patients Admitted to the ICU: Prospective Study,” Journal of Trauma and Acute Care Surgery (submitted); “The President’s Emergency Plan for AIDS Relief and Adult Mortality: A replication study of HIV development assistance effects in Sub-Saharan African countries,” PlosOne (Revised); “Perivascular macrophages in the neonatal macaque brain undergo massive necroptosis after simian immunodeficiency virus infection,” Brain Pathology (submitted); and “Student and Faculty Perception of Faculty

Stressors During a Curriculum Reform.” Dr. Lou co-presented “Emergency General Surgery in Mechanical Support,” Academic Surgical Congress; “Disparities in Drug Use by Sexual Orientation in U.S. Women- Findings from 2015-2017 National Survey of Family Growth (presentation won the Legree Halman Peoples’ Choice Memorial Award). APHA; “Sexual Coercion is Associated with Elevated Risks for Illicit Drug Use and Sexually Transmitted Infection in Men who have Sex with Men.”

Ismail Moudden, PhD

Ismail Moudden, PhD, co-authored “A novel dimensionality reduction approach to improve Microarray Data Classification,” Journal of Big Data; “Learned Model for Genes Selection and Cancer Classification based on Particle Swarm Optimization: A Case Study on Prostate Cancer Behavior Analysis.” Advances in Intelligent Systems and Computing; “Linear and Nonlinear Features Extraction Analysis for Human Activity Recognition.” Applied and Computational Mathematics; and “Feature Selection and Extraction for Text Categorization using Genetic Algorithm employing Machine Learning and Artificial Intelligence Techniques,” Journal of Big Data.

Mohan Pant, PhD

Mohan Pant, PhD, participated as a Review Panelist at the National Science Foundation (NSF). He co-presented “Competency-based learning (CBL): Developing a competency-based geometry methods course, the Annual Meeting of the American Educational Research Association, Toronto, Canada.

Brynn Sheehan 2019

Manuscripts Published

Maduro, R. S., Sheehan, B. E., Shappie, A., Hitson, P., & Derlega, V. (Accepted, 2019). Identity centrality and public regard are associated with emotional reactions to the Pulse night club shooting among LGBTQ individuals: Testing a sequential mediation model. Violence and Victims.

Brush, J. E., Siraj, E., Kemp, C., Liverman, D., McMichael, B., Lamichhane, R., & Sheehan, B. E. (2019). A contemporary analysis of the effect of diabetes mellitus on complication rates of coronary artery bypass surgery. American Journal of Cardiology. Advanced online publication. doi: 10.1016/j.amjcard.2019.07.053

Bharadwaj, P., Worthley, K., Li, Y., Sheehan, B. E., Morris, D., Helfen, K., Thompson, D., Zimbro, K., & Bleznak, A. (2019). Challenges of promoting uniformity in programs within a Healthcare System. Palliative Care: Research and Treatment.

Morris, D., Sheehan, B. E., Lamichhane, R., Zimbardo, K. S., Morgan, M. K., & Bharadwaj, P. (2019). Validation of an automated mortality index using the electronic medical record system in a network of acute care hospitals. *Journal of Hospital Administration*, 8, 8-14. doi: 10.5430/jha.v8n3p8

Sheehan, B. E. & Lau-Barraco, C. (2019). A daily diary investigation of self-reported alcohol-related direct and indirect aggression. *Aggressive Behavior*, 45, 463-471. doi: 10.1002/ab.21834

Sheehan, B. E., Derlega, V. J., Maduro, R. S., & Winstead, B. (2019). Prior experiences with racial discrimination predict psychological reactions to a recent incident of race-based rejection among African-American university students. *Journal of Loss and Trauma*, 24, 115-128. doi: 10.1080/15325024.2018.1560639

Manuscripts Under Review

Sheehan, B. E., Derlega, V., Maduro, R. S., & Totonchi, D. A. (Under Review, 2019). Predicting Black and White students' willingness to engage in collective action after the police officer killing of Terence Crutcher: Testing a sequential mediation model. *Psychology of Violence*.

Sheehan, B. E., Maduro, R. S., & Derlega, V. (Under Review, 2019). "It could have happened to me": LGBTQ persons' differences predict likelihood of social action after a hate crime. *Psychology of Sexual Orientation and Gender Diversity*.

Hollis, B., Sheehan, B. E., Kelley, M. L., & Stevens, L. (Under Review, 2019). Hookups among college students: Examining the association between hookup motives and personal affect. *Journal of American College Health*.

Sheehan, B. E., Maduro, R. S., & Derlega, V. J. (Under Review, 2019). Do HIV disclosure laws increase stigmatization of persons with HIV?: Results from two experimental studies. *Stigma and Health*.

Invited Talks Sheehan, B. E. (September 2019). Psychology careers and pathways. Panel talk presented to the William & Mary Graduate & Professional School Fair, Williamsburg, VA.

Conference Presentations

Tosi, A.a, Taylor-Fishwick, J., Im, A., Brown, S., Trainor, M., Sheehan, B. E., Cleveland, L., & Leader, A. (April 2020). Addressing resource deficits in Clinica Comunitaria Esperanza Pediatrica, a free clinic for uninsured, Spanish-speaking children. Poster submitted to be presented at the 11th Annual Consortium of Universities for Global Health Conference, Washington, DC.

Aziz, M. a, Beale, J., Sheehan, B. E., Bandy, N., & Martyak, M. (February 2020). Perioperative Antibiotic Selection and Surgical Site Infection in Elective Colon Surgery. Paper to be presented at the Southeastern Surgical Congress 2020 Annual Scientific Meeting, New Orleans, LA.

Brown, S.a, Wilkins, E., Tosi, A.a, Trainor, M.a, Hopkins, K.a, Brown, J.a, Cleveland, L., Sheehan, B. E., Leader, A. (November 2019). Clinica

Comunitaria Esperanza: Prevalence of obesity among patients of the student-run free clinic for uninsured, Spanish-speaking residents of Hampton Roads, VA. Poster presented at the Student National Medical Association Regional Medical Education Conference, Washington, DC.

Patel, H.a, Van De Graaf, M.a, Sheehan, B. E., & Ryal, J. L. (November 2019). Reduction in readmission rates associated with a team-based approach to hospital discharge transition of care. Poster presented at the Association of American Medical Colleges Annual Meeting, Phoenix, AZ.

Tosi, A.a, Taylor-Fishwick, J., Im, A., Brown, S., Trainor, M., Sheehan, B. E., Cleveland, L., & Leader, A. (October 2019). Clinica Comunitaria Esperanza Pediatrica: A student-run free clinic for uninsured, Spanish-speaking children in Norfolk, VA. Poster presented at the 11th Annual CHOP Global Health Conference, Philadelphia, PA.

Perdoni, C.a, Sheehan, B. E., Bak, M., & Lieb, D. (October 2019). Epidemiology and disparities of thyroid cancer in Hampton Roads: Retrospective analysis of outcomes across a single healthcare system. Poster presented at the 89th Annual Meeting for the American Thyroid Association, Chicago, IL.

Siraj, E. S., Nelson, A., Brush, J. E., Ullal, J., Lamichhane, R. & Sheehan, B. E. (June 2019). Outcomes before and after implementation of a comprehensive multidisciplinary cardiovascular diabetes program among patients with diabetes undergoing coronary artery bypass grafting. Poster presented at the 79th Annual Meeting for the American Diabetes Association, San Francisco, CA.

Weingart, G., Muir, D., Bunch, A. C., Patel, J., & Sheehan, B. E. (May 2019). Evaluation of the emergency department usage after a hurricane: Identifying at-risk populations. Poster presented at the 30th Annual Meeting for the Society for Academic Emergency Medicine, Las Vegas, NV.

Johnson, R.a, O'Connor, M.a, Gyurjyan-Bunch, A., Ferguson, K. P., Sheehan, B. E., Knapp, B., Counselman, F., & Van Voorhees, A. S. (May 2019). Health disparities in the misdiagnosis of cellulitis. Oral presentation presented at the 30th Annual Meeting for the Society for Academic Emergency Medicine, Las Vegas, NV.

Jaclyn Simpkins, PhD

Jackie co-authored the poster presentation "Comparing the Safety and Efficiency of Resident and Attending Cataract Surgery using Two Different Kinds of Surgical Techniques" (Submitted and Accepted to the Association for Research in Vision and Ophthalmology 2019 Annual Conference) and "Assessment of the Banff Working Group Classification of Definitive BK Polyomavirus Nephropathy" (Submitted and Accepted to the American Society of Nephrology Kidney Week 2019 Conference). She gave an oral presentation: "Trauma Outcomes Amongst Geriatric Dialysis Patients" (Submitted and Accepted to the Academic Surgical Congress 2020).

EVMS-Sentara HADSI Governance Board Members- (Six voting members)

EVMS

Richard V. Homan, MD
President, Provost and Dean of the School of Medicine

Alfred Z. Abuhamad, MD
Vice Dean for Clinical Affairs

William J Wasilenko, PhD
Vice Dean for Research

Sentara

Carolyn Carpenter
President, Sentara Norfolk General Hospital

Thomas Lundquist, MD
CMO Optima Health/Sentara Executive

Michael Reagin
Sentara Healthcare Chief Information Officer

EVMS-Sentara HADSI Steering Committee Members

Voting members

EVMS

Margaret Baumgarten, MD
*Professor, Family & Community Medicine,
Chief Quality Officer, EVMS Medical Group*

C. Donald Combs, PhD
Vice President and Dean, School of Health Professions

Sunita Dodani, MD, PhD
*HADSI Founding Director, Chair HADSI Steering
Committee*

Marybeth S. Hughes, MD, FACS
Chief of Surgical Oncology, Associate Professor, Surgery

Cynthia C. Romero, MD
*Director, The Brock Institute for Community and Global
Health*

O. John Semmes, PhD
Director, The Leroy T. Canoles Cancer Research Center

Brynn Sheehan, PhD
*Assistant Professor, EVMS-Sentara Healthcare Analytics
and Delivery Science Institute*

Elias Siraj, MD
Director, Strelitz Diabetes Center

Sentara

Kathleen Barackman, MSN, RN, CCRC
Director, Clinical Research, Sentara Medical Group

David Baran, MD
Sentara Cardiology Specialist

John Brush, MD
Sentara Cardiology Specialist

Michael Hooper, MD
Vice President of Medical Affairs

Sam Owens, Director
Sentara IT Enterprise Data Services

David Torgerson
Sentara Healthcare, Vice President of Enterprise Analytics

Kathie Zimbardo, PhD, RN
Director, Sentara Quality Research Institute

Non-Voting Member

Kristie Morgan, PhD
Sentara Quality Research Institute

2020

January

Su	Mo	Tu	We	Th	Fr	Sa
			1	2	3	4
5	6	7	8	9	10	11
12	13	14	15	16	17	18
19	20	21	22	23	24	25
26	27	28	29	30	31	

February

Su	Mo	Tu	We	Th	Fr	Sa
						1
2	3	4	5	6	7	8
9	10	11	12	13	14	15
16	17	18	19	20	21	22
23	24	25	26	27	28	29

March

Su	Mo	Tu	We	Th	Fr	Sa
1	2	3	4	5	6	7
8	9	10	11	12	13	14
15	16	17	18	19	20	21
22	23	24	25	26	27	28
29	30	31				

Round 5
Pilot Testing

April

Su	Mo	Tu	We	Th	Fr	Sa
			1	2	3	4
5	6	7	8	9	10	11
12	13	14	15	16	17	18
19	20	21	22	23	24	25
26	27	28	29	30	31	

Summer Research
Boot Camps

May

Su	Mo	Tu	We	Th	Fr	Sa
					1	2
3	4	5	6	7	8	9
10	11	12	13	14	15	16
17	18	19	20	21	22	23
24	25	26	27	28	29	30
31						

June

Su	Mo	Tu	We	Th	Fr	Sa
	1	2	3	4	5	6
7	8	9	10	11	12	13
14	15	16	17	18	19	20
21	22	23	24	25	26	27
28	29	30				

July

Su	Mo	Tu	We	Th	Fr	Sa
			1	2	3	4
5	6	7	8	9	10	11
12	13	14	15	16	17	18
19	20	21	22	23	24	25
26	27	28	29	30	31	

August

Su	Mo	Tu	We	Th	Fr	Sa
						1
2	3	4	5	6	7	8
9	10	11	12	13	14	15
16	17	18	19	20	21	22
23	24	25	26	27	28	29
30	31					

Fall Research
Boot Camps

September

Su	Mo	Tu	We	Th	Fr	Sa
		1	2	3	4	5
6	7	8	9	10	11	12
13	14	15	16	17	18	19
20	21	22	23	24	25	26
27	28	29	30			

October

Su	Mo	Tu	We	Th	Fr	Sa
				1	2	3
4	5	6	7	8	9	10
11	12	13	14	15	16	17
18	19	20	21	22	23	24
25	26	27	28	29	30	31

November

Su	Mo	Tu	We	Th	Fr	Sa
1	2	3	4	5	6	7
8	9	10	11	12	13	14
15	16	17	18	19	20	21
22	23	24	25	26	27	28
29	30					

December

Su	Mo	Tu	We	Th	Fr	Sa
		1	2	3	4	5
6	7	8	9	10	11	12
13	14	15	16	17	18	19
20	21	22	23	24	25	26
27	28	29	30	31		