



A Descriptive Analysis of
Chlamydia and Gonorrhea
Incidence in Accomack, VA

Jacy Wang
Dr. Don Robison, PhD., CPT.

Chlamydia and Gonorrhea are STI's

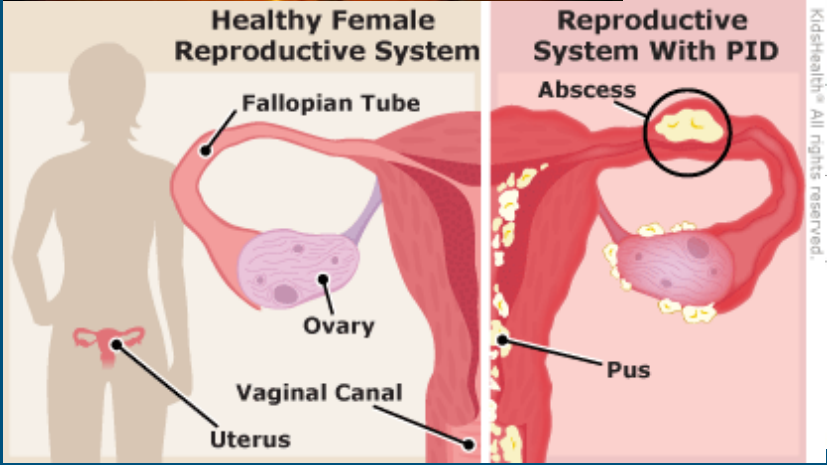


Chlamydia

5 in 10 men who have been infected with Chlamydia don't have any symptoms

Chlamydia

7 in 10 women who have been infected with Chlamydia have no symptoms

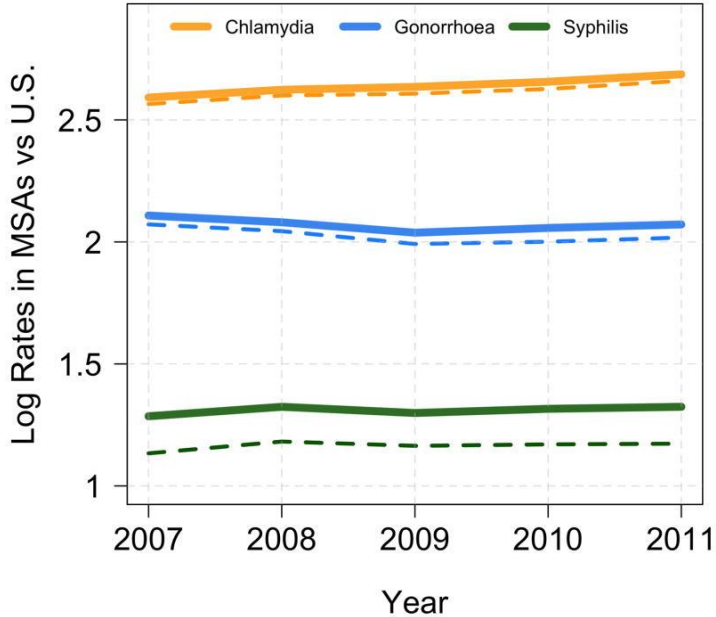


BACKGROUND: STDs PREDICT FUTURE HIV RISK

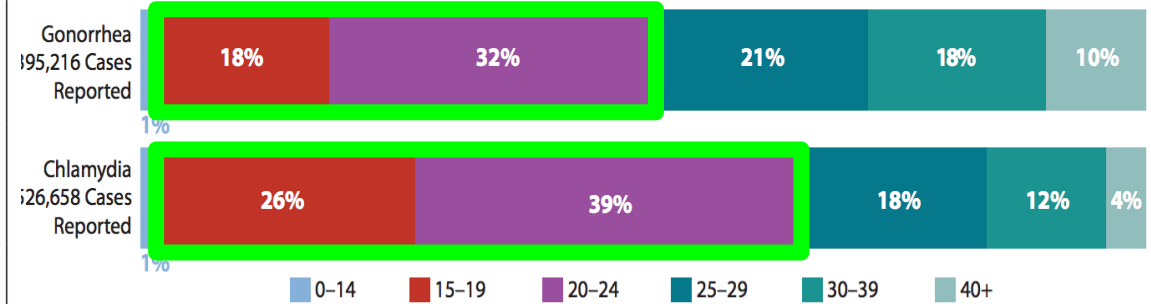
Rectal GC or CT	1 in 15 MSM were diagnosed with HIV within 1 year.*
P or S Syphilis	1 in 18 MSM were diagnosed with HIV within 1 year.**
No rectal STD or syphilis infection	1 in 53 MSM were diagnosed with HIV within 1 year.*

CAPTC

Epidemiology



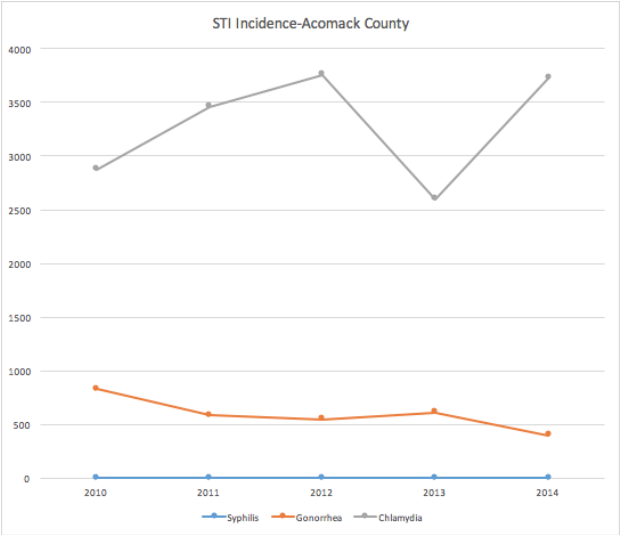
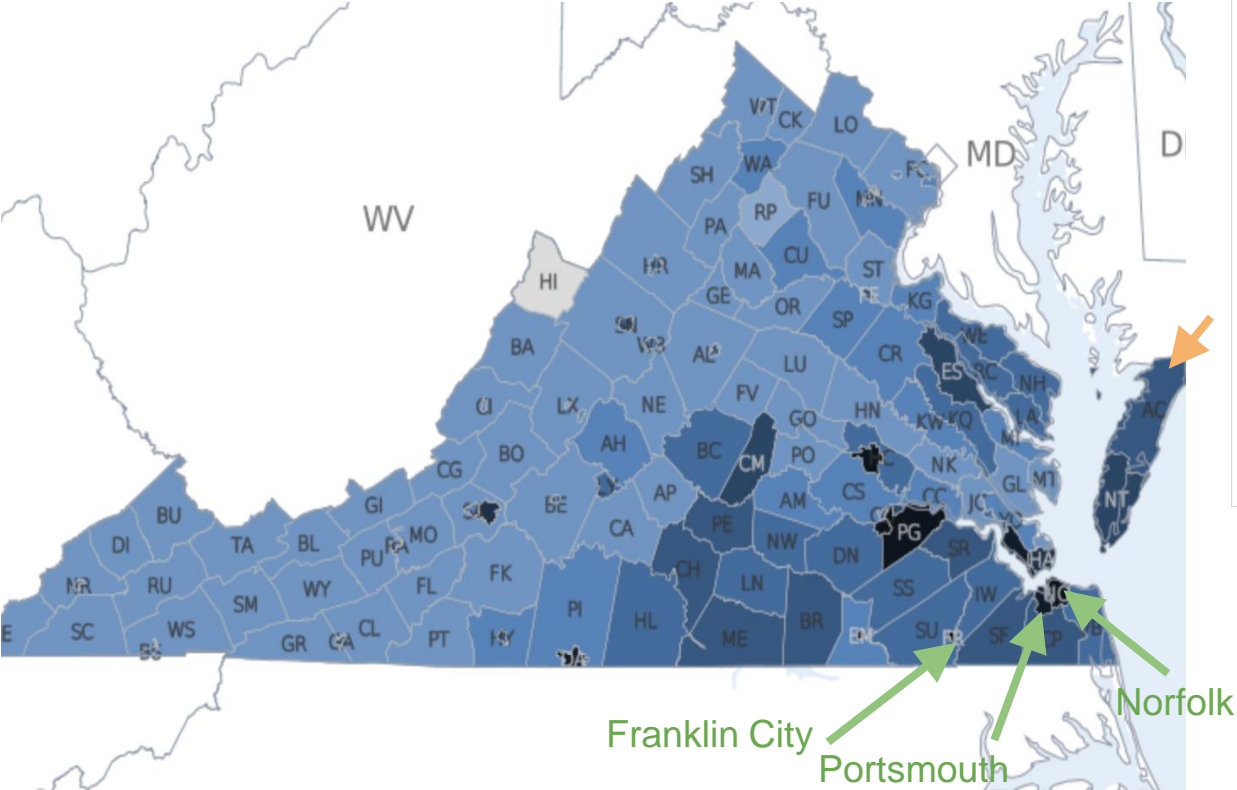
Most Reported Chlamydia and Gonorrhoea Infections Occur among 15–24-Year-Olds



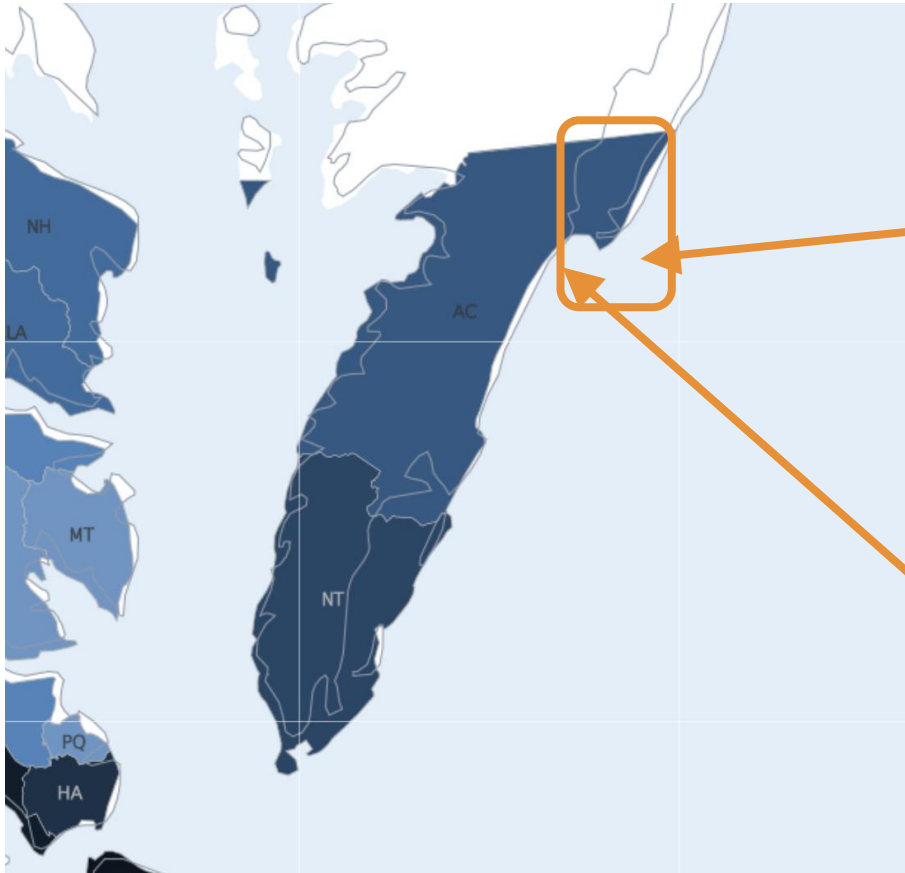
Comparison between the 50 most populous MSAs (solid lines) versus all U.S. population (dashed lines). Rates are consistently higher in MSAs, particularly for syphilis, the least common of the three STDs under study

MSAs - Metropolitan Statistical Areas

EVMS STI Needs Assessment



Accomack County, VA



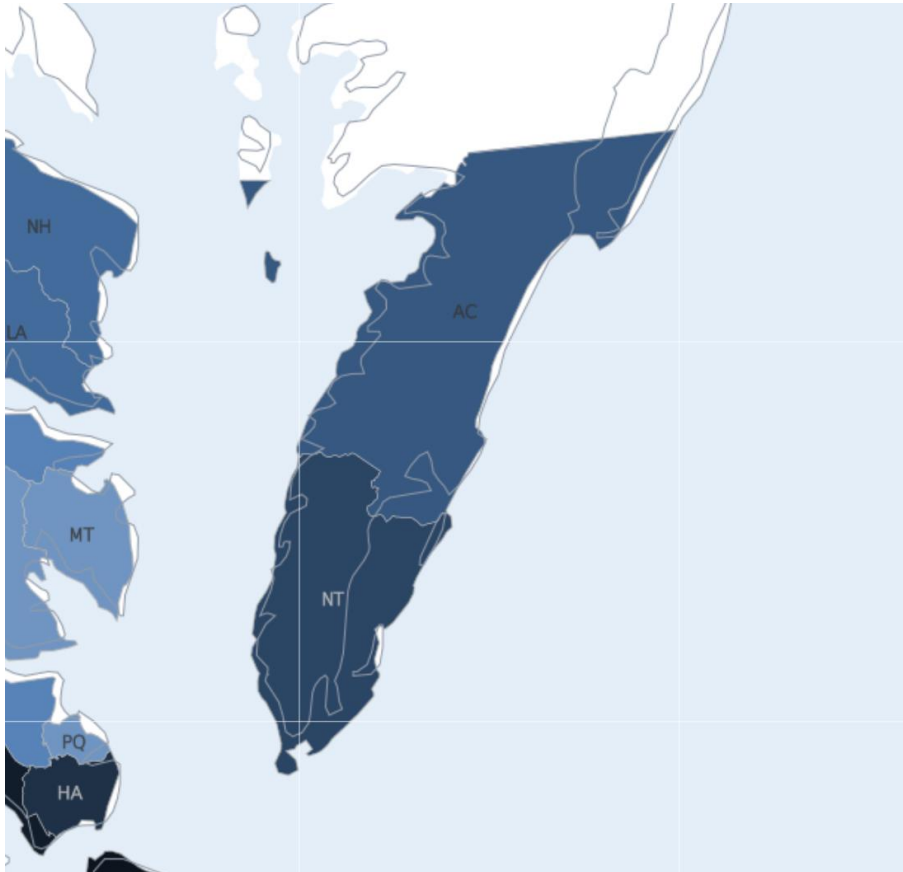
Chincoteague and Assateague



Wallops Island NASA flight facility



Accomack County, VA



Accomack County, VA

County in: [Virginia](#), [United States](#)

33,165

Population

449.5 square miles

73.8 people per square mile

Census data: ACS 2014 5-year unless noted

Age

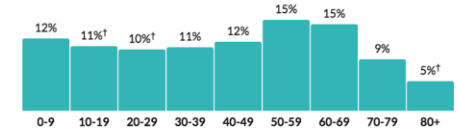
45.3

Median age

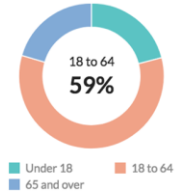
about 20 percent higher than the figure in Virginia: 37.6

about 20 percent higher than the figure in United States: 37.6

Population by age range



Population by age category



[Show data](#) / [Embed](#)

Geographical mobility

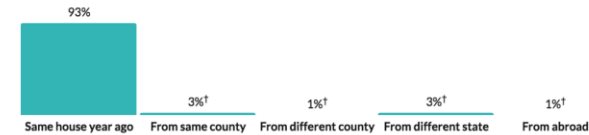
7.1%

Moved since previous year

about half the rate in Virginia: 15.6%

about half the rate in United States: 14.9%

Population migration since previous year



Place of birth

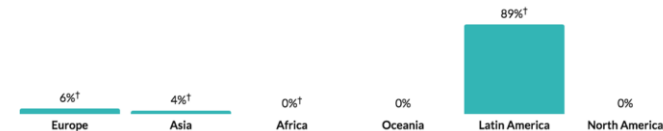
6.7%

Foreign-born population

about three-fifths of the rate in Virginia: 11.7%

about half the rate in United States: 13.2%

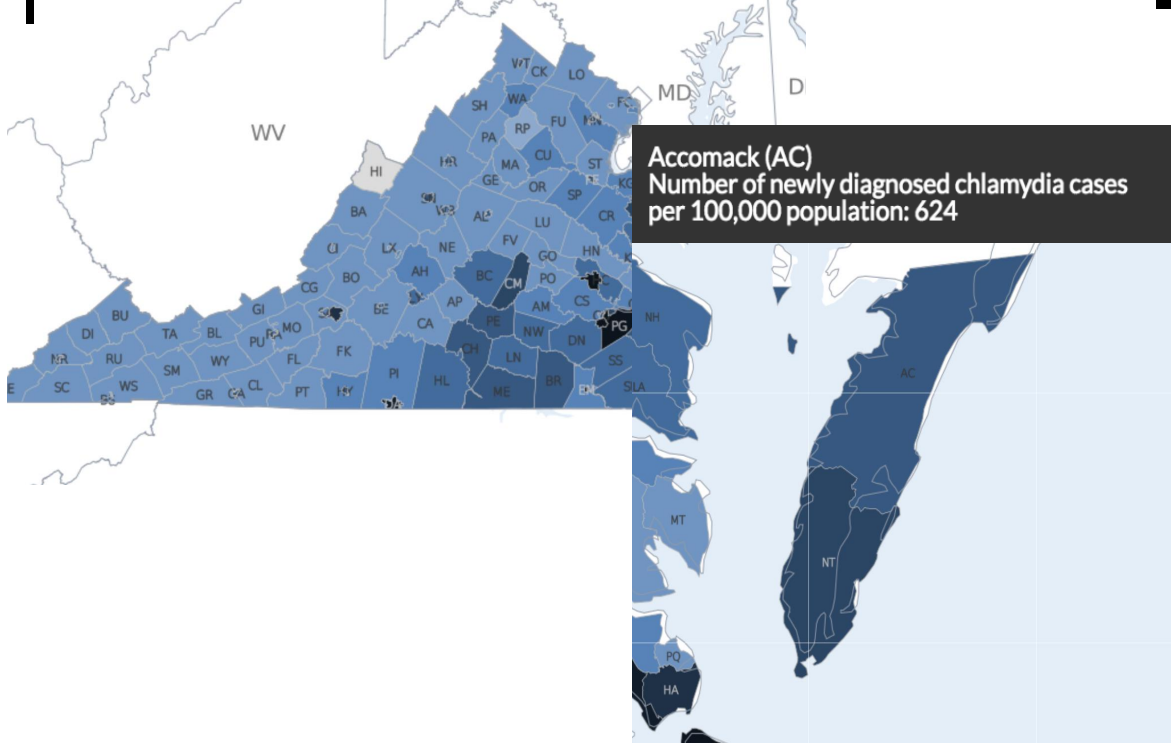
Place of birth for foreign-born population



Accomack County, VA

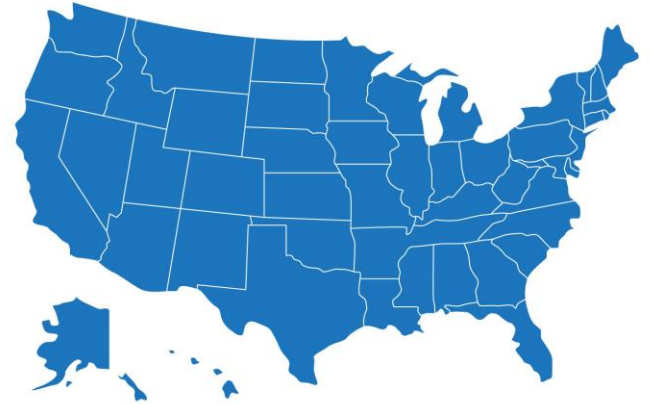
Virginia

Number of newly diagnosed chlamydia cases per 100,000 population: 435



USA

Number of newly diagnosed chlamydia cases per 100,000 population: 479



Example of Descriptive Analysis for VHI data

Descriptive Statistics

	N	Minimum	Maximum	Sum	Mean	Std. Deviation
Chlamydia Count	826	.00	1.00	151.00	.1828	.38674
Gonorrhea	826	.00	1.00	71.00	.0860	.28047
Valid N (listwise)	826					

Correlations

		AGE	STIcount
AGE	Pearson Correlation	1	-.557**
	Sig. (2-tailed)		.000
	N	826	826
STIcount	Pearson Correlation	-.557**	1
	Sig. (2-tailed)	.000	
	N	826	826

** . Correlation is significant at the 0.01 level (2-tailed).

Future directions

Income

\$23,231

Per capita income

about two-thirds of the amount in Virginia: \$34,152

about 80 percent of the amount in United States: \$28,930

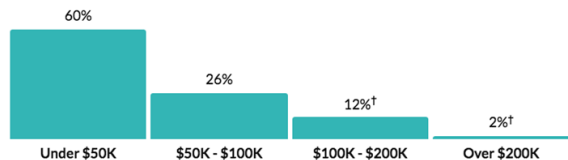
\$39,412

Median household income

about three-fifths of the amount in Virginia: \$65,015

about three-quarters of the amount in United States: \$53,889

Household income



[Show data / Embed](#)

Poverty

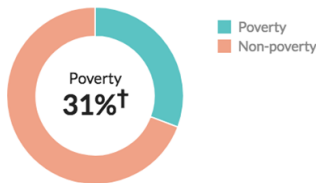
19.6%

Persons below poverty line

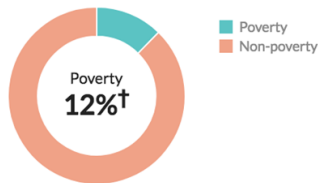
more than 1.5 times the rate in Virginia: 11.5%

about 25 percent higher than the rate in United States: 15.5%

Children (Under 18)



Seniors (65 and over)



Educational attainment

80.3%

High school grad or higher

about 90 percent of the rate in Virginia: 88.3%

about 90 percent of the rate in United States: 86.7%

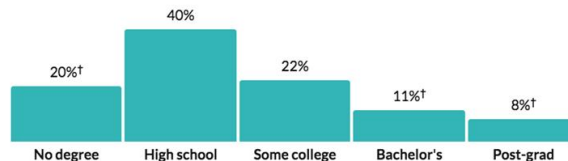
18.8%

Bachelor's degree or higher

about half the rate in Virginia: 36.3%

about three-fifths of the rate in United States: 29.8%

Population by minimum level of education



* Universe: Population 25 years and over

[Show data / Embed](#)



Questions?

Thank you to Dr. Romero, Dr. Mellor, Dr. Robison, all of our guest speakers, and SCBI scholars for a wonderful summer experience!

