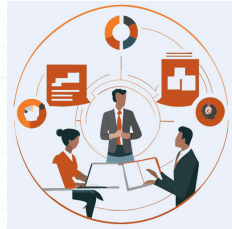


# NDLW 2023 Strategy a Day

**EVMS**  
INSTRUCTIONAL DESIGN  
& TECHNOLOGIES

## Day 2: AI Policies

Creating effective policies for the use of artificial intelligence (AI) in higher education is crucial to ensuring responsible and beneficial AI integration. **Engaging relevant stakeholders** in policy development and clearly **defining the objectives and goals** of AI integration are the first steps in creating policy.



**Ethical guidelines** for AI use in education should also be created including bias mitigation, fairness, transparency, and data privacy. It is important to establish mechanisms for **accountability** if issues or biases arise and to prioritize data privacy through strict **data protection** policies.

**Accessibility** and **inclusivity** are also important considerations. AI-powered education tools and materials should be accessible to all students and should not have access barriers. Consistent **feedback** and **evaluation** of systems and policies can assist with this.



Institutions can provide **training** and **education** opportunities to understand AI technology and its integration using pilot programs before full-scale implementation. **Interdisciplinary collaboration** and **responsible procurement** of tools should be utilized.

**COMING SOON: EVMS is currently in the process of developing an institutional AI policy.**



The content and images on this flyer were generated by AI. Visit [chat.openai.com](https://chat.openai.com) and [app.recraft.ai](https://app.recraft.ai) to explore the AI systems we used for this flyer.