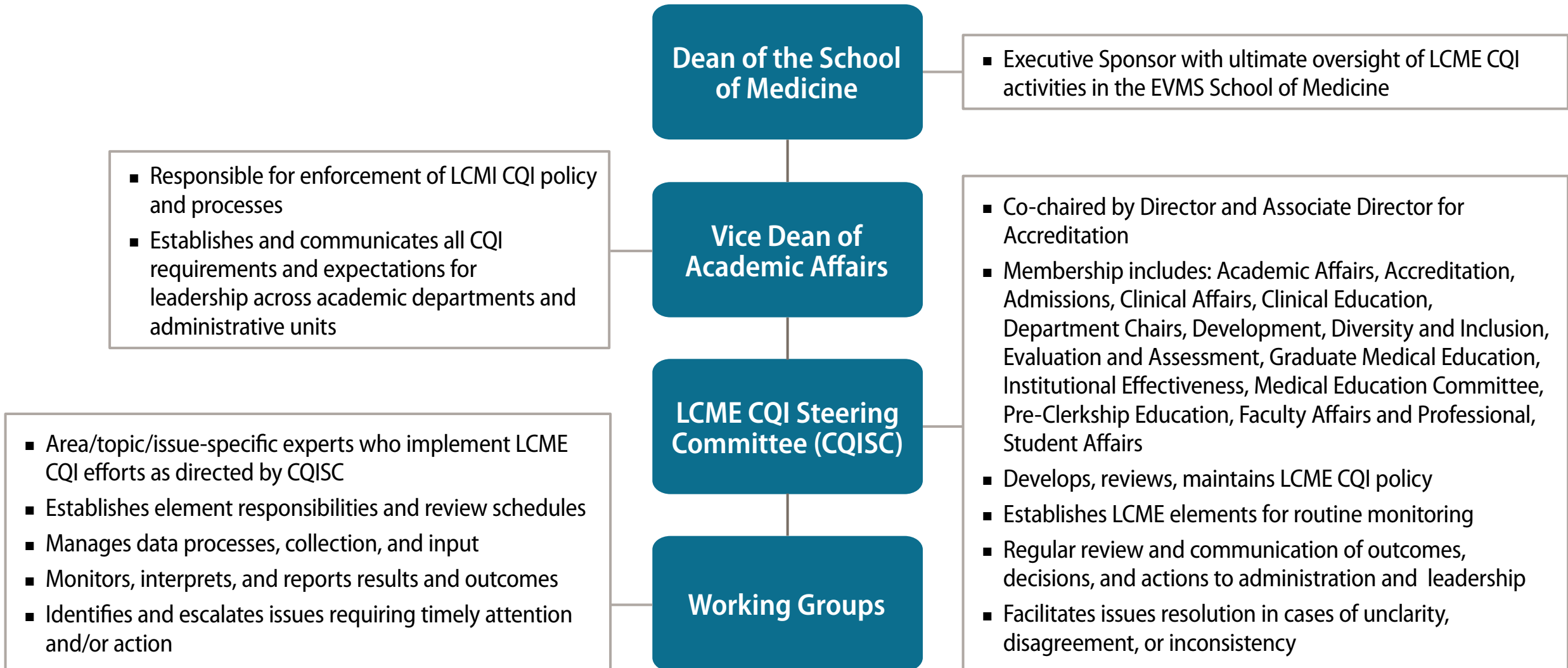


Eastern Virginia Medical School | School of Medicine Continuous Quality Improvement Organizational Support Structure



Working Groups

MD Program and Students Working Group Working Groups

- Assessment and Evaluation (8.4, 8.5, 9.4)
- Clinical (8.6, 8.7)
- Content (7.1, 7.2, 7.3, 7.4, 7.5, 7.6, 7.7)
- Development and Management (6.1, 8.1, 8.2, 8.3, 8.8, 9.5, 9.6, 9.7, 9.8)
- Learning Environment (3.5, 3.6)
- Residents (9.1)

Faculty Working Group

- Faculty (4.3, 4.4, 4.5, 9.2)

Institutional Setting Working Group

- Administration (2.4, 12.4, 12.5, 12.6, 12.7, 12.8)
- Admissions and Enrollment (10.2, 10.3, 12.1)
- Diversity and Inclusion (3.3)
- Information Technology (5.9)
- Research (3.2)
- Strategic Planning (1.1)